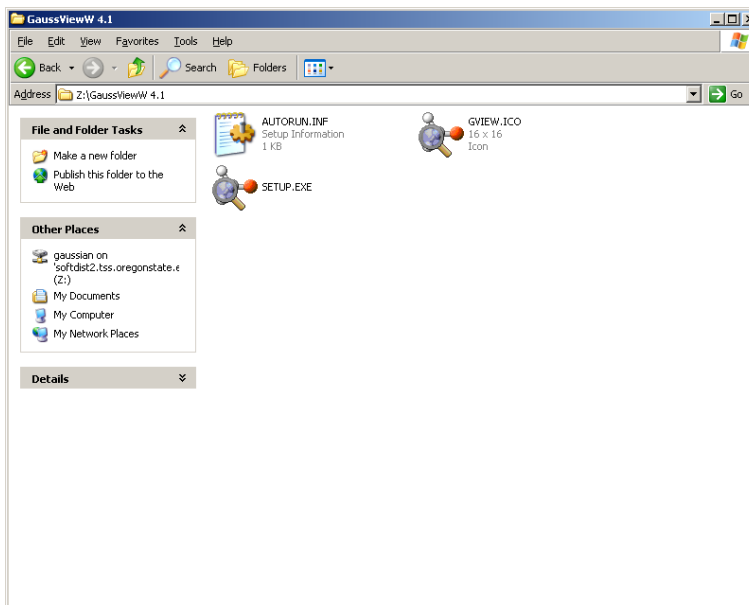


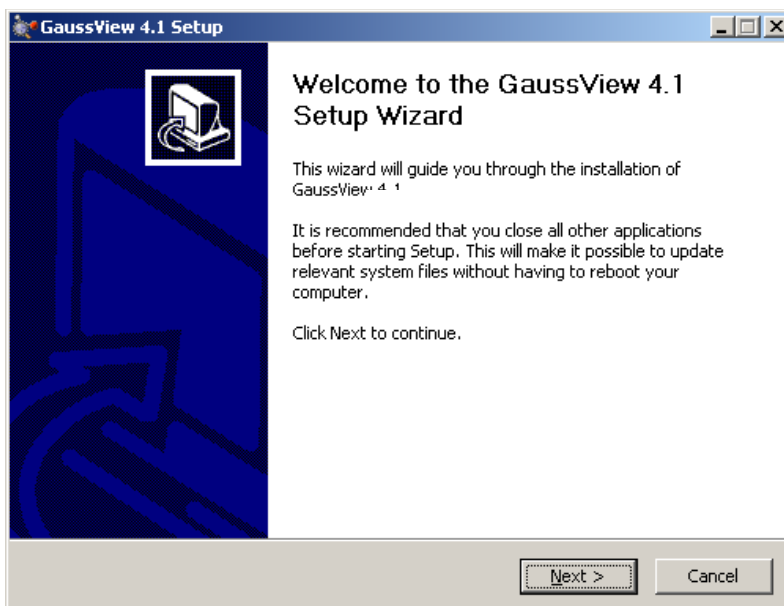
Click on the SETUP.EXE icon to start the installation process:



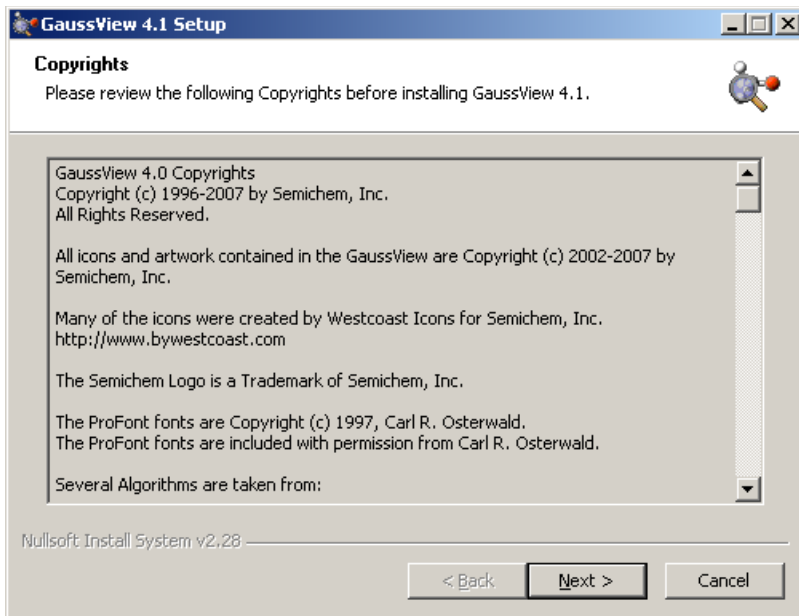
If you are downloading from the server, you may get this message. Click Run:



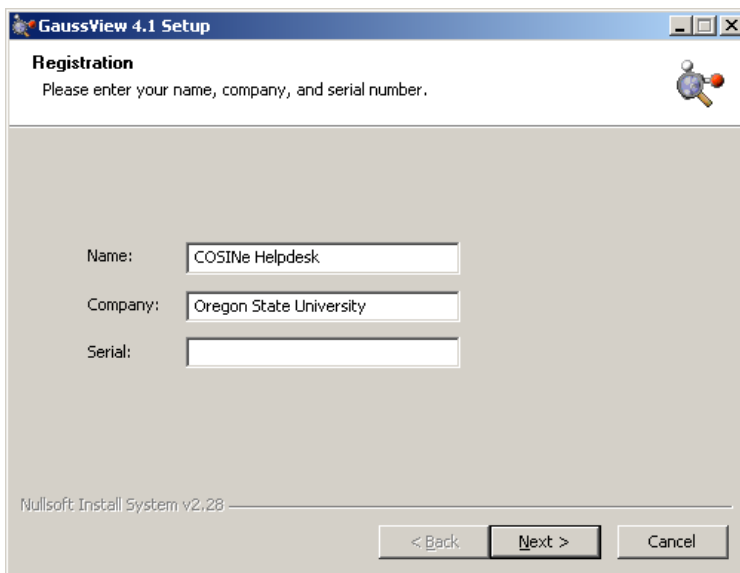
Click Next:



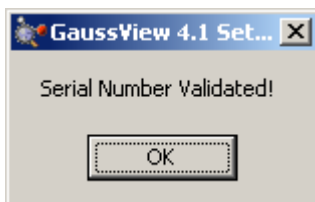
Read through the copyright information, then click Next:



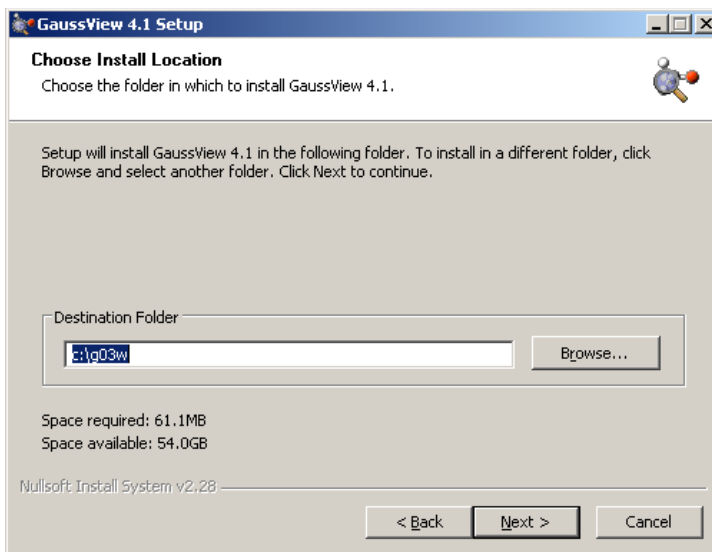
Enter your information and the serial number you were given for the software:



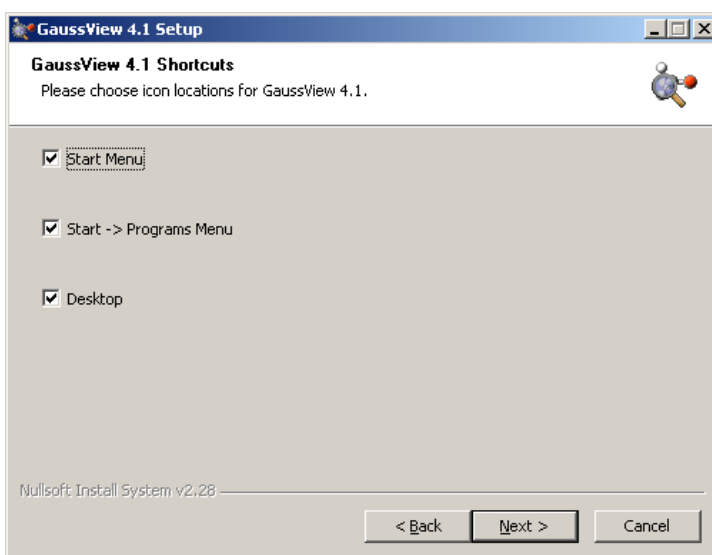
This little window will pop up to let you know the serial number was validated. Click OK:



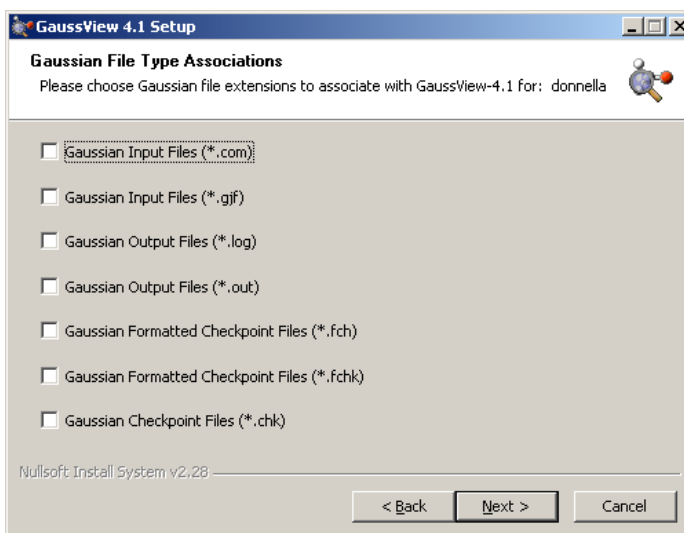
Enter the location for the software. Click Browse if you want to change the location, then click Next:



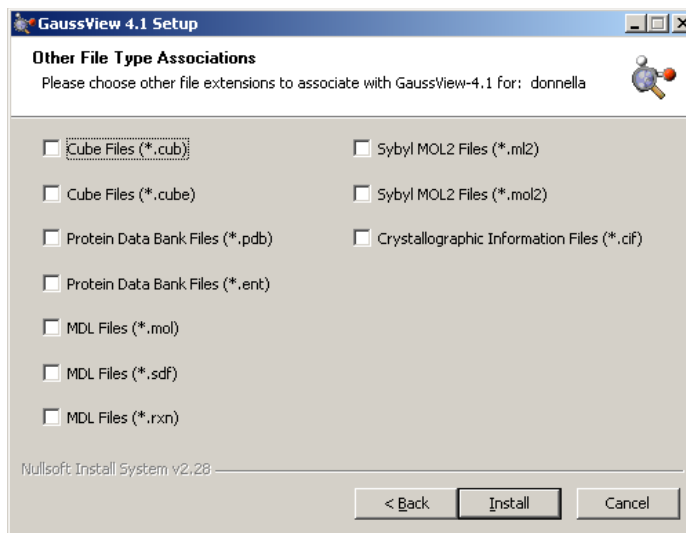
Choose the shortcut locations you would like, then click Next:



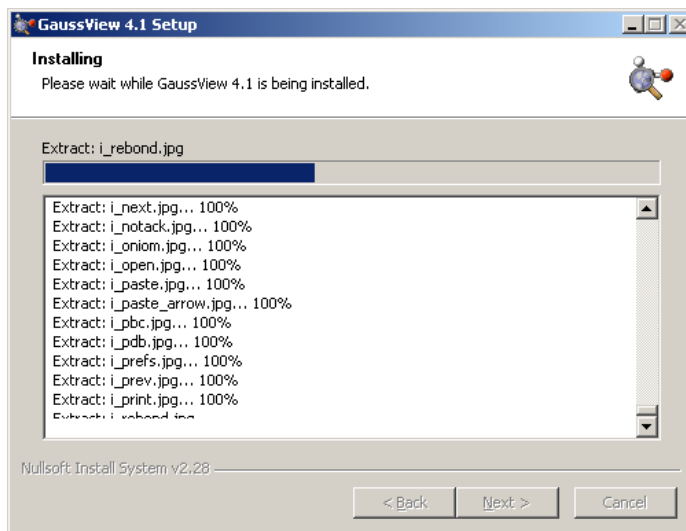
Choose the file type associations you will need, then click Next:



Choose additional file type associations you will need, then click Install:



You will see this window as the install progresses:



This window will display once the installation is complete. Click Finish:

