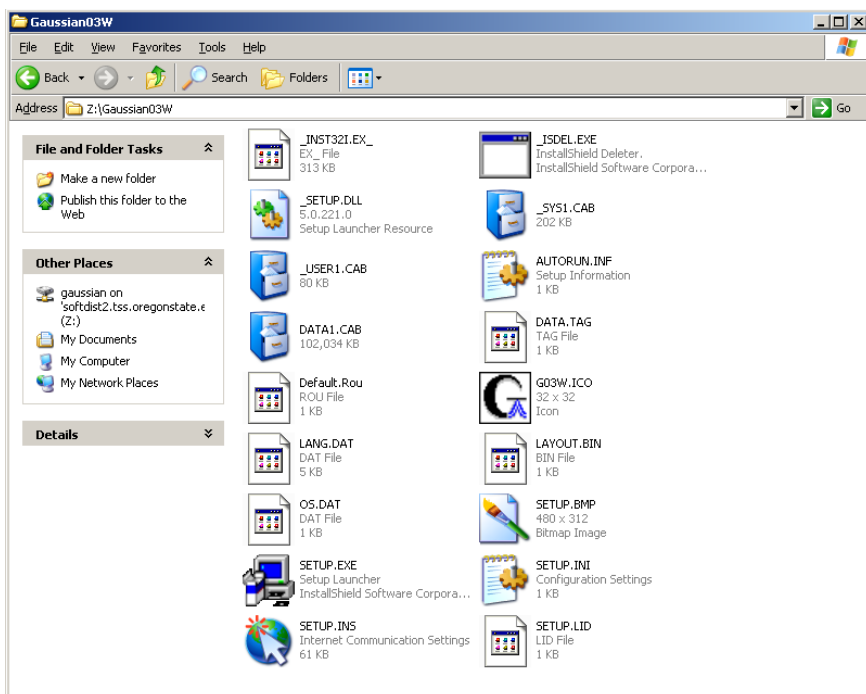


Click on the SETUP.EXE icon to start the installation process:



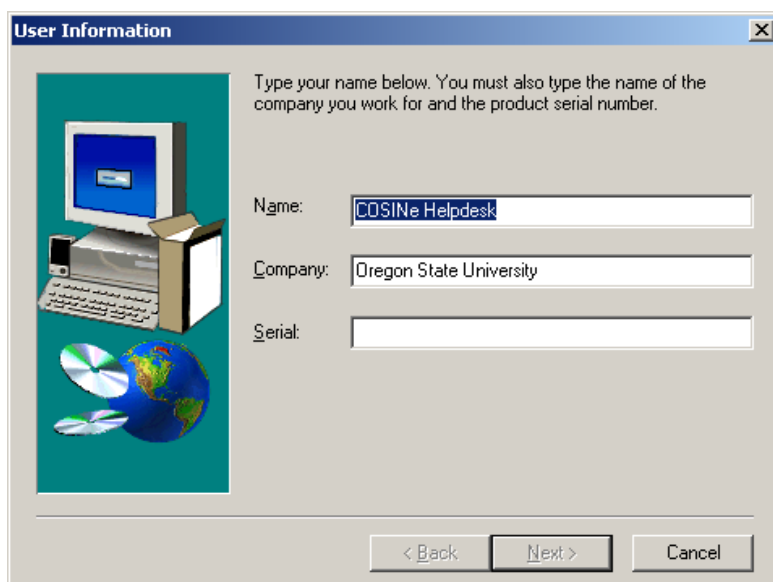
If you are downloading from the server, you may get this message. Click Run:



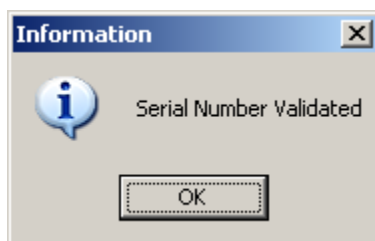
Make sure you do not have any other Windows programs running on your computer before you start the installation process. Click Next:



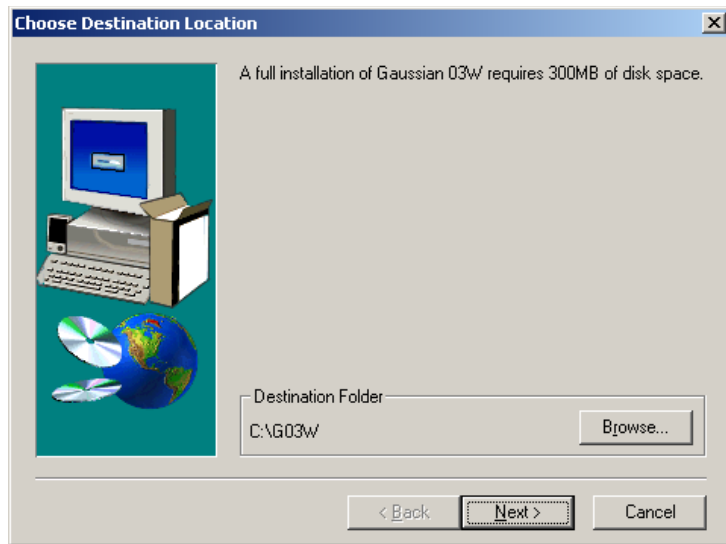
Enter your information and the serial number you were given for the software:



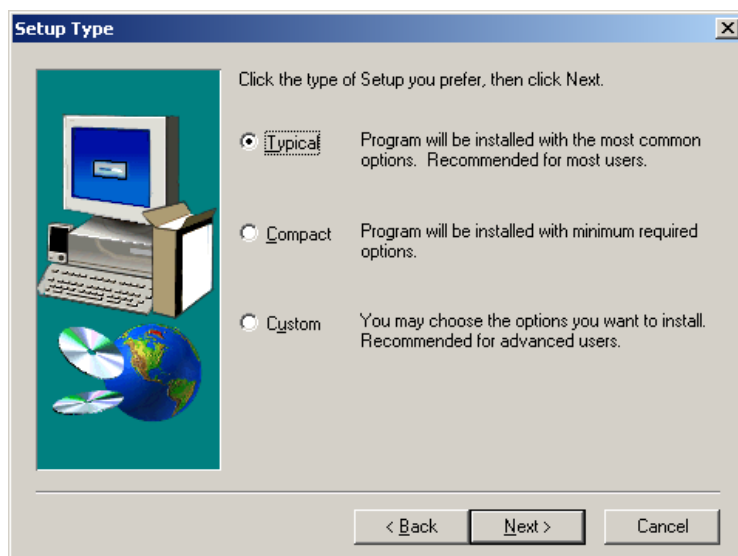
This little window will pop up to let you know the serial number has been validated. Click OK:



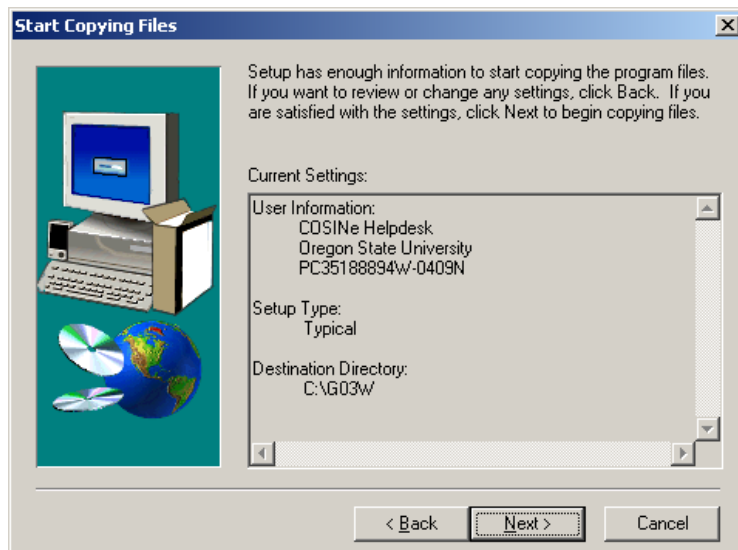
You can install the program in the default destination folder or click Browse to choose another location on your computer. Click Next:



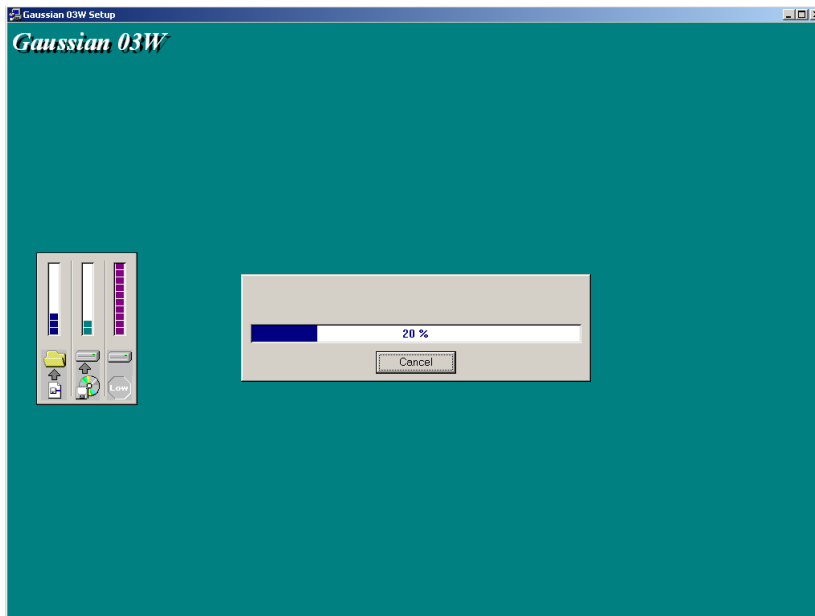
Choose the type of installation you would like to do, then click Next:



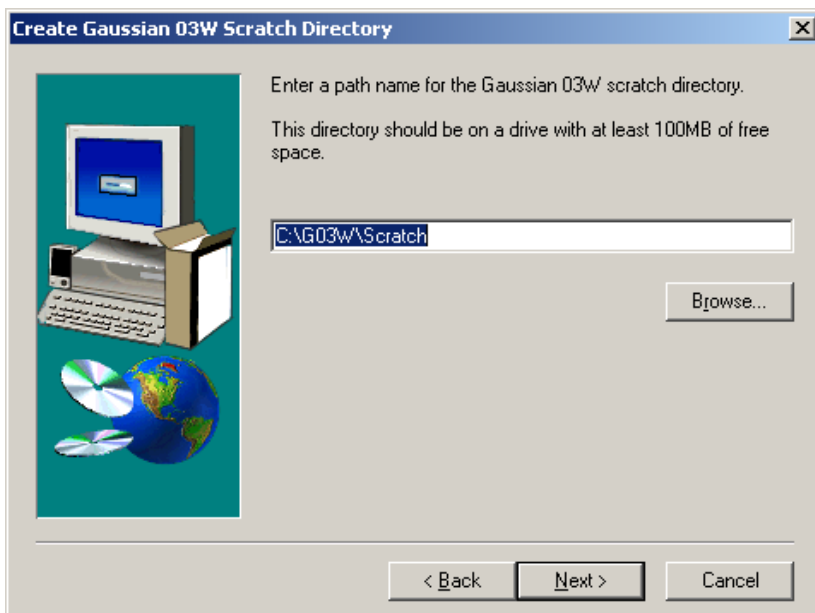
If the settings look right, click Next:



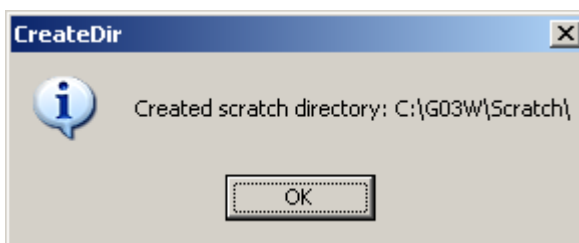
You will see these windows as the installation process takes place:



Enter the location for the scratch directory. Click Browse if you want to change the location, then click Next:



You will get this window once the scratch directory has been created. You may also get another window that states "Setting Default.Rou for more than 48MB memory."



You will see this window once the installation is complete. Click Finish:

